

# DRY CELL

## RAIL/TRANSIT



Discover® DRY CELL Commercial Rail/Transit batteries outperform traditional Flooded, AGM, and GEL deep-cycle batteries and are a resilient battery solution for diesel engine, commercial rail, and transit applications.

DRY CELL Commercial Rail/Transit batteries exceed passenger transport safety standards, tolerate vibration and a wide ambient temperature range, and support long duration current draws and deliver high cranking performance.

DRY CELL Commercial Rail/Transit batteries are trusted by the world's most reputable commercial vehicle, rail, bus and tram organizations.



ENHANCED  
RUN TIME



EXTENDED  
SERVICE LIFE



RESILIENCE



EXTREME  
TEMPERATURES



VIBRATION  
RESISTANT



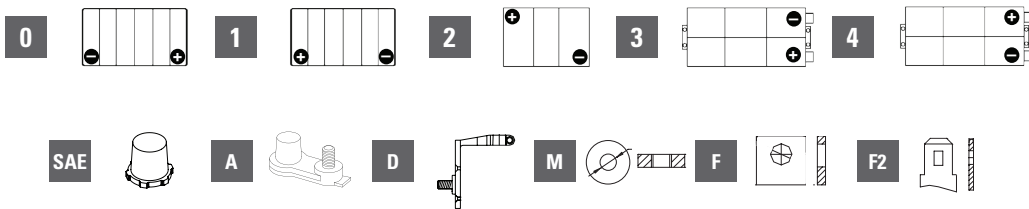
HL3 V0 FLAME  
RETARDANT CASE



RELIABLE, SAFE,  
CERTIFIED

Part No.	Ind Ref	Volts	C10	C5	C3	Length	Width	Height*	Weight	Layout/ Polarity	Terminal Type
			1.80 VPC 30°C	1.75 VPC 30°C	1.70 VPC 30°C	(mm)			(kg)		
DRY CELL RAIL/TRANSIT - (VO, HL3)											
DCR06-215	GC6 DIN	6	215	205	175	244	189	254	32	2	SAE
DCR12-090	49-L5	12	87	82	72	350	175	190	27	0	SAE
DCR12-115	31	12	115	100	95	330	172	216	33	1	AM
DCR12-110	31	12	108	95	82	330	172	216	32	1	AM
DCR12-235	4DR	12	235	220	185	524	225	222	64	3	AT
DCR12-270	8DR	12	267	245	220	522	275	222	78	3	AT
DCR12-120	FrontTerminal	12	115	105	100	541	125	217	39	4	M8

\* Height refers to the distance from the bottom to the top of the case, and does not include the terminals.



## DRY CELL

**RAIL/TRANSIT**



### ENHANCED RUN TIME

- High Amp Hour Capacity
- High Operational Voltage Over Lifetime
- 80% DoD to 1.9 VPC



### EXTENDED SERVICE LIFE

- Long Life Superior to Flooded Lead-Acid / GEL / AGM Deep Cycle Batteries
- 550+ Cycles 70% DoD (IEC 254-1 Traction Lead-Acid)



### RESILIENCE

- Partial Stage of Charge Operation Superior to AGM
- Intense Duty Cycling Superior to GEL / AGM
- Over-Charge / Discharge Resilience Superior to AGM



### EXTREME TEMPERATURES

- High Temperature Life Superior to AGM
- Low Temperature Operation Superior to Flooded Lead-Acid / GEL / AGM Batteries



### VIBRATION RESISTANT

- Vibration Resistance Superior to GEL / AGM
- Vibration Shock Tested IEC 61373, DIN EN 61373, SAE J537



### HL3 V0 FLAME RETARDANT CASE

- Fire and Smoke Protection Tested, Safe for Use in Passenger Transport (DIN EN 45545-2)



### RELIABLE, SAFE, CERTIFIED

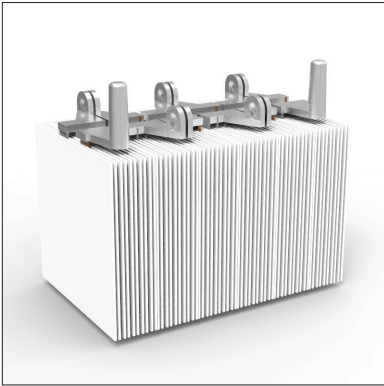
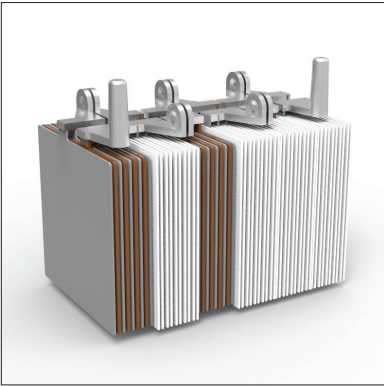
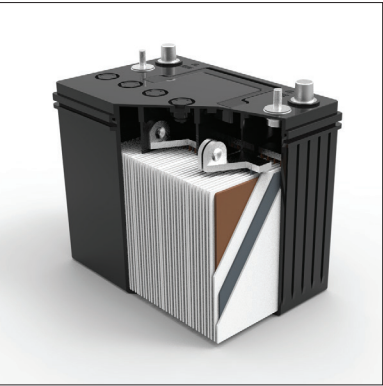
- Valve Regulated Lead-Acid Dry Cell
- Maintenance-free
- Nonspillable. No-gas
- Safe for Environmentally Sensitive Areas
- Spark and Explosion Tested SAE J1495

# PRODUCT FEATURES

## DRY CELL



ENHANCED ALLOYS	CARBON BOOST	AUTOMATED THROUGH-THE-PARTITION WELD *	POLYPROPYLENE CASE *	HYDRO POLYMER
Thick Plate Construction with Graphite Enhanced Plate Alloys Deliver Maximum Runtime Over Operational Life.	Carbon Additives increase Duty Cycle Performance, Battery Charge Acceptance and Partial State of Charge operation.	Improved Product Consistency and Quality, Less Wasted Lead than Manual Welding Process.	High Heat Resistance and Durability, Lighter Weight.	Organic Capillary Separator Technology Saturated with Hydro Polymer Electrolytes Delivers Extra Electrolyte Volume.
		Supports High Current Loads and Lowers Internal Resistance.	Pressure Relief Valves with Low Open / Close Tolerance Reduces Water Loss and Extends Cycle Life.	Resists Dry-Out and Prevents Thermal Runaway.
			Integrated Flame Arrestors Prevent Fire and Explosion.	Maintains Performance Characteristics Over Operational Life.
				Absorbed Glass Mat Dry Cell Technology, No Free-Flowing of Electrolyte.



### \* KEY MODELS

Discover® attempts to ensure the correctness of the product description and data. We reserve the right to change designs and/or specifications without notice or obligation. It is the responsibility of the reader to verify the information presented. | REV B

[discoverbattery.com](https://discoverbattery.com)