

# DRY CELL

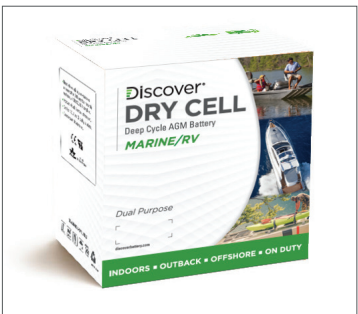
## MARINE/RV



Discover® Marine/RV batteries outperform traditional Flooded, AGM, and GEL deep-cycle batteries with exceptional dual-purpose, starting and deep-cycle performance.

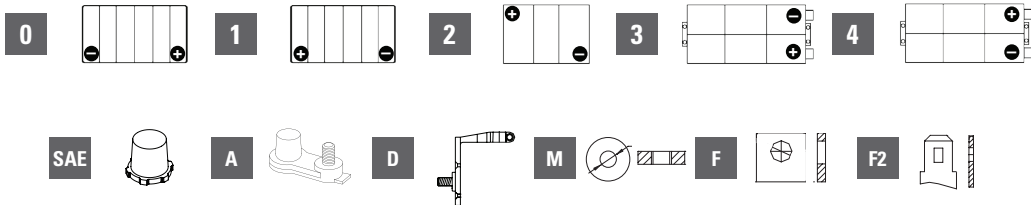
DRY CELL Marine/RV batteries are tolerant of a wide ambient temperature range, vibration, and Partial State of Charge (PSOC) operation.

Trusted by boat builders and recreational vehicle manufacturers, DRY CELL Marine/RV batteries are safe, nonspillable, and maintenance-free.



Part No.	Ind Ref	Volts	C20	RC	CCA	Length	Width	Height*	Weight	Layout/ Polarity	Terminal Type
			1.75 VPC 30°C			(mm)			(kg)		
DRY CELL MARINE/RV											
DCMGC6	GC6	6	230	490	750	260	180	254	30	2	AM (M8)
DCML16	903-L16	6	400	880	1000	295	180	383	53	2	M8
DCMU1	U1	12	35	52	250	195	130	164	11	1	M6
DCM24	24	12	85	160	450	258	172	214	24	1	AM (M8)
DCM27	27	12	105	200	550	308	172	212	29	1	AM (M8)
DCM27S	27	12	100	200	700	308	172	212	29	1	AM (M8)
DCM31	31	12	120	240	700	330	172	216	33	1	AM (M8)
DCM31T	31T	12	150	300	750	327	180	254	40	1	AM (M8)
DCM4D	4D	12	240	515	1100	524	225	222	63	4	AT
DCM8D	8D	12	290	625	1300	522	275	222	78	4	AT
DCM8DS	8D	12	260	600	1450	522	275	222	78	4	AT

\* Height refers to the distance from the bottom to the top of the case, and does not include the terminals.



ENHANCED  
RUN TIME



EXTENDED  
SERVICE LIFE



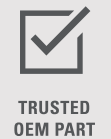
RESILIENCE



EXTREME  
TEMPERATURES



VIBRATION  
RESISTANT



TRUSTED  
OEM PART



RELIABLE, SAFE,  
CERTIFIED

## DRY CELL

**MARINE/RV**



### ENHANCED RUN TIME

- High amp hour capacity
- High operational voltage over lifetime
- 50% DoD above 2.05 VPC



### EXTENDED SERVICE LIFE

- Long life superior to flooded/AGM/Gel deep-cycle batteries
- 700+ cycles 60% DoD (IEC 896-2 Stationary Lead-Acid)
- 1,400+ cycles 50% DoD (BCIS-06 Deep-Cycle Lead-Acid)



### RESILIENCE

- Partial stage of charge operation superior to AGM
- Intense duty cycling superior to AGM/Gel
- Overcharge and over-discharge resilience superior to AGM



### EXTREME TEMPERATURES

- High temperature life superior to AGM
- Low temperature operation superior to flooded/AGM/Gel batteries



### VIBRATION RESISTANT

- Vibration resistance superior to AGM / Gel
- Vibration shock tested (IEC 61373, DIN EN 61373, SAE J537)



### TRUSTED OEM PART

- Exceeds OEM specifications
- Innovative technology
- Global service and support



### RELIABLE, SAFE, CERTIFIED

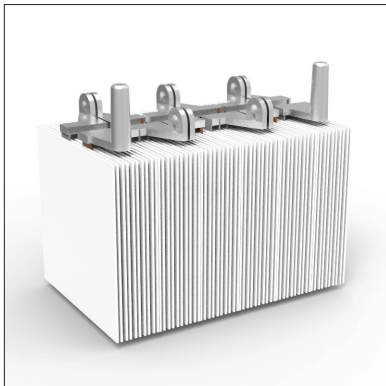
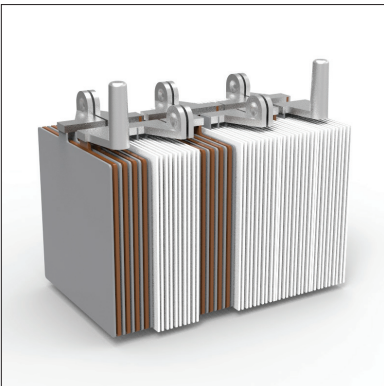
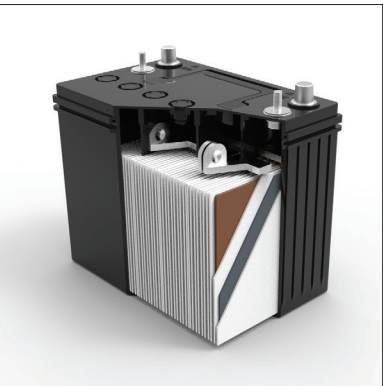
- Valve Regulated Lead-Acid, DRY CELL AGM
- Maintenance-free, nonspillable, no-gassing
- Spark and explosion tested (SAE J1495)

# PRODUCT FEATURES

## DRY CELL



ENHANCED ALLOYS	CARBON BOOST	AUTOMATED THROUGH-THE-PARTITION WELD *	POLYPROPYLENE CASE *	HYDRO POLYMER
Thick plates with graphite enhanced alloys deliver maximum runtime over operational life	Carbon additives increase duty cycle performance, charge acceptance, and partial state of charge operation	Improved intercell weld consistency, and less lead waste than manual welding process (key industry models)  Supports high current loads and lowers internal resistance	High heat resistance and durability (key industry models)  High precision pressure relief valves reduce water loss and extend life  Integrated flame arrestors to prevent fire and explosion	Organic capillary separators with hydropolymer electrolytes resist dry-out and prevent thermal runaway  Maintains performance characteristics over operational life



### \* KEY MODELS

Discover® attempts to ensure the correctness of the product description and data. We reserve the right to change designs and/or specifications without notice or obligation. It is the responsibility of the reader to verify the information presented. | REV C

[discoverbattery.com](https://discoverbattery.com)