

DRY CELL

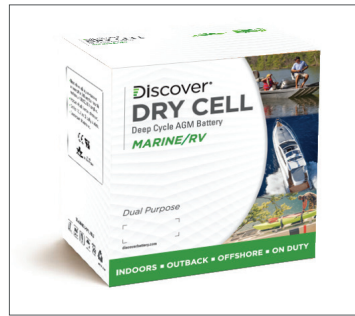
MARINE/RV



Discover® Marine/RV batteries outperform traditional Flooded, AGM, and GEL deep-cycle batteries with exceptional dual-purpose, starting and deep-cycle performance.

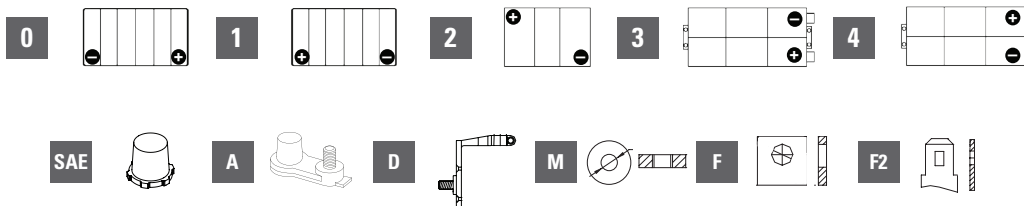
DRY CELL Marine/RV batteries are tolerant of a wide ambient temperature range, vibration, and Partial State of Charge (PSOC) operation.

Trusted by boat builders and recreational vehicle manufacturers, DRY CELL Marine/RV batteries are safe, nonspillable, and maintenance-free.



Part No.	Ind Ref	Volts	C20	RC	CCA	Length	Width	Height*	Weight	Layout/ Polarity	Terminal Type
			1.75 VPC 30°C								
DRY CELL MARINE/RV											
DCMGC6	GC6	6	230	490	750	260	180	254	30	2	AM (M8)
DCML16	903-L16	6	400	880	1000	295	180	383	53	2	M8
DCMU1	U1	12	35	52	250	195	130	164	11	1	M6
DCM24	24	12	85	160	450	258	172	214	24	1	AM (M8)
DCM27	27	12	105	200	550	308	172	212	29	1	AM (M8)
DCM31	31	12	120	240	700	330	172	216	33	1	AM (M8)
DCM31T	31T	12	150	300	750	327	180	254	40	1	AM (M8)
DCM4D	4D	12	240	515	1100	524	225	222	63	4	AT
DCM8D	8D	12	290	625	1300	522	275	222	78	4	AT

* Height refers to the distance from the bottom to the top of the case, and does not include the terminals.



ENHANCED
RUN TIME



EXTENDED
SERVICE LIFE



RESILIENCE



EXTREME
TEMPERATURES



VIBRATION
RESISTANT



TRUSTED
OEM PART



RELIABLE, SAFE,
CERTIFIED

DRY CELL

MARINE/RV



ENHANCED RUN TIME

- High Amp Hour Capacity
- High Operational Voltage Over Lifetime
- 50% DoD to 2.05 VPC



EXTENDED SERVICE LIFE

- Long Life Superior to Flooded Lead-Acid / GEL / AGM Deep Cycle Batteries
- 700+ Cycles 60% DoD (IEC 896-2 Stationary Lead-Acid)
- 1,400+ Cycles 50% DoD (BCIS-06 Deep Cycle Lead-Acid)



RESILIENCE

- Partial Stage of Charge Operation Superior to AGM
- Intense Duty Cycling Superior to GEL / AGM
- Over-Charge / Discharge Resilience Superior to AGM



EXTREME TEMPERATURES

- High Temperature Life Superior to AGM
- Low Temp Operation Superior to Flooded Lead-Acid / GEL / AGM Batteries



VIBRATION RESISTANT

- High Temperature Life Superior to AGM
- Low Temperature Operation Superior to Flooded Lead-Acid / GEL / AGM Batteries



TRUSTED OEM PART

- Exceeds OEM Specifications
- Innovative Technology
- Global Service and Support



RELIABLE, SAFE, CERTIFIED

- Valve Regulated Lead-Acid Dry Cell
- Maintenance-free
- No-spill, No-gas
- Safe for Environmentally Sensitive Areas
- Spark and Explosion Tested SAE J1495

PRODUCT FEATURES

DRY CELL



ENHANCED ALLOYS

CARBON BOOST

AUTOMATED THROUGH-THE-PARTITION WELD *

POLYPROPYLENE CASE *

HYDRO POLYMER

Thick Plate Construction with Graphite Enhanced Plate Alloys Deliver Maximum Runtime Over Operational Life.

Carbon Additives increase Duty Cycle Performance, Battery Charge Acceptance and Partial State of Charge operation.

Improved Product Consistency and Quality, Less Wasted Lead than Manual Welding Process.

High Heat Resistance and Durability, Lighter Weight.

Organic Capillary Separator Technology Saturated with Hydro Polymer Electrolytes Delivers Extra Electrolyte Volume.

Supports High Current Loads and Lowers Internal Resistance.

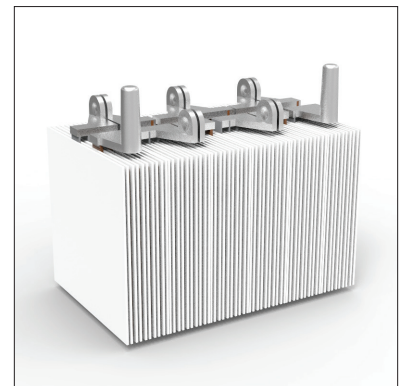
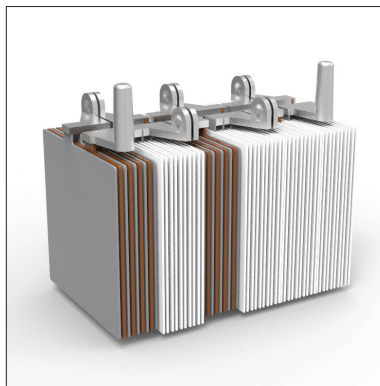
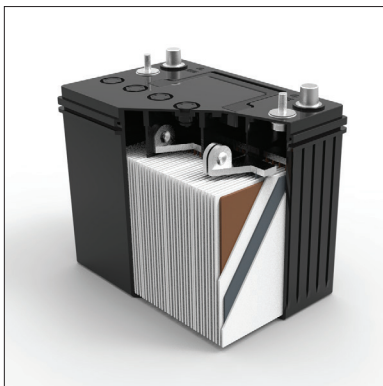
Pressure Relief Valves with Low Open / Close Tolerance Reduces Water Loss and Extends Cycle Life.

Resists Dry-Out and Prevents Thermal Runaway.

Integrated Flame Arrestors Prevent Fire and Explosion.

Maintains Performance Characteristics Over Operational Life.

Absorbed Glass Mat Dry Cell Technology, No Free-Flowing of Electrolyte.



* KEY MODELS