

Discover[®] DRY CELL

Deep Cycle AGM Battery

MARINE/RV

INDOORS ■ OUTBACK ■ OFFSHORE ■ ON DUTY



SOLID PERFORMANCE

- Absorbed Glass Mat (AGM) deep cycle battery technology
- Heavy duty deep cycle performance with reliable power for engine starting
- Superior deep cycle capacity for longer run times under demanding loads and house power requirements
- Superior protection against vibration versus other battery technology
- Constructed to meet or exceed Original Equipment battery runtime and service life specifications
- Faster charging times than conventional batteries

SAFE & EASY INSTALLATION

- Multiple terminal options and flush cover designs for easy installation
- Leak and spill proof – safe for use in environmentally sensitive areas and with electronics
- No off gassing. Provides safe and corrosion free operation with 99.9% efficient gas recombination valves



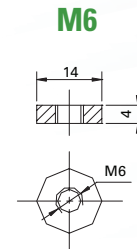
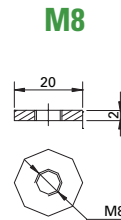
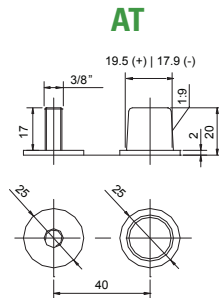
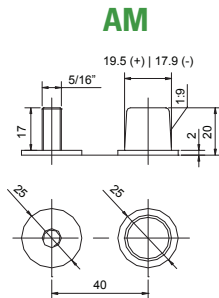
Maintenance-free Technology:

- Maintenance-free. No topping up required
- High charge retention. Self discharge rate of less than 2-3% per month (25°C)
- Eliminates corrosion due to off-gassing

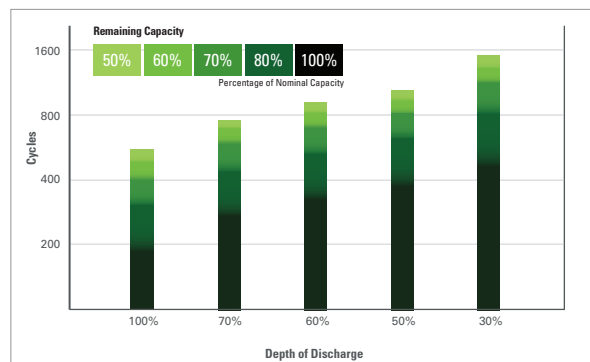
TYPE NO.	CAPACITY	MINUTES OF DISCHARGE		CA REFERENCE*			LENGTH	WIDTH	TOTAL HEIGHT	WEIGHT	TERMINAL
		20 HR	@ 25A	@ 75A	@27°C/80°F	@0°C/32°F					
6 VOLT MARINE/RV DRY CELL BATTERY											
DCMGC6	230	490	115	1150	900	750	260	180	274	31	AM
DCMGT6	260	600	160	1250	990	825	260	180	282	36	M8
DCM305	350	740	205	1550	1200	1000	295	180	365	46	AM
DCML16	400	880	244	1550	1200	1000	295	180	385	55	M8
12 VOLT MARINE/RV DRY CELL BATTERY											
DCMU1	35	52	11	350	300	250	195	130	180	11	M6
DCM24	85	160	35	750	650	450	258	172	235	25	AM
DCM27	105	200	46	950	850	550	308	172	232	30	AM
DCM31	120	240	58	1100	1000	700	330	172	236	33	AM
DCM31T	150	300	74	1200	1050	750	327	180	274	40	AM
DCM185	235	505	125	1400	1100	900	386	178	372	63	AM
DCM4D	240	515	130	1550	1200	1100	524	225	242	63	AT
DCM8D	290	625	170	1950	1500	1300	522	275	242	78	AT

*Cranking Amps data is provided as a reference only. Specific application sizing and life factors must be considered when using deep cycle product in a starting application.

Terminals



CYCLE LIFE IN RELATION TO DEPTH OF DISCHARGE (25°C)



- Classified non-spillable, non-hazardous and exempt from DOT hazardous materials regulations. 49 CFR 173.150(d) compliant.
- Approved for all modes of transportation.
- Certified to ISO, UL and CE quality standards.
- Compliance with IEC standards.



Discover® attempts to ensure the correctness of the product description and data contained herein. We reserve the right to change designs, specifications and pricing at any time without notice or obligation. It is the responsibility of the reader of this information to verify any and all information presented herein.